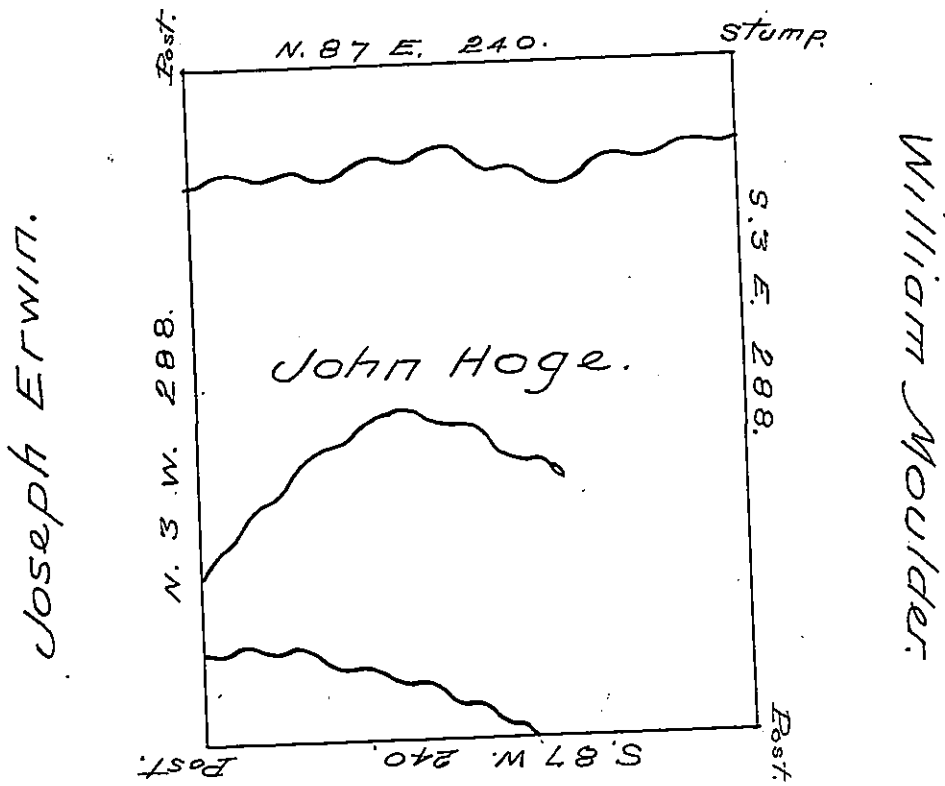


George Martin.



Phillip Erwin.

Situate on the waters of big Beaver Creek  
 in district No. 3 Allegany County containing  
 four hundred and seven acres, eighty six per-  
 ches and allowance, Survey'd 2-June 1796  
 in pursuance of a warrant granted John  
 Hoge 21-April 1794.

Ben Stokely D.S.

Danl. Brodhead Esq. S. G.

IN TESTIMONY that the above is a copy of the original remaining on file in  
 the Department of Internal Affairs of Pennsylvania, made  
 conformably to an Act of Assembly approved the 16th day of  
 February, 1833, I have hereunto set my Hand and caused  
 the Seal of said Department to be affixed at Harrisburg,  
 this sixteenth day of March 1905.

*James J. Brown*  
 Secretary of Internal Affairs.